

Connect to MOVEit Transfer using SFTP

The purpose of this guide is to demonstrate how to connect to the BLUE CROSS VT MOVEit Transfer site via a secure FTP client.

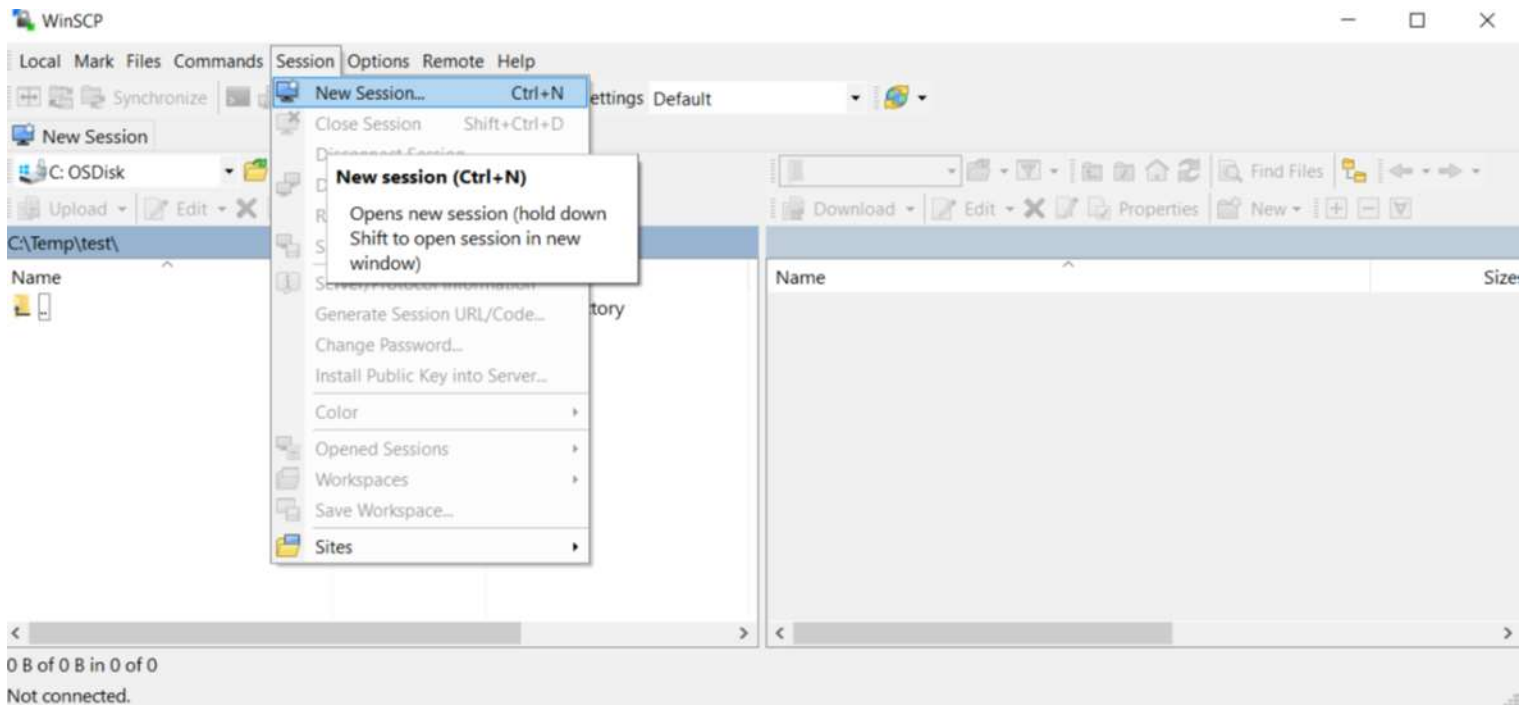
Select and download an SFTP client based on your **organization's IT policies**. Use a search engine such as Google to find free downloadable tools. See [SFTP client tools supported by MoveIT](#) below. **Note:** BLUE CROSS VT does not assume responsibility for the security of software downloaded from the internet.

The SFTP client tool WinSCP may be downloaded from the internet for free. Download from this link <https://winscp.net/eng/download.php> and follow the installation instructions. See download hints and tips by clicking [here](#).

The screen shots below are taken from the windows based SFTP client called "WinSCP", the steps will be similar on most FTP Clients.

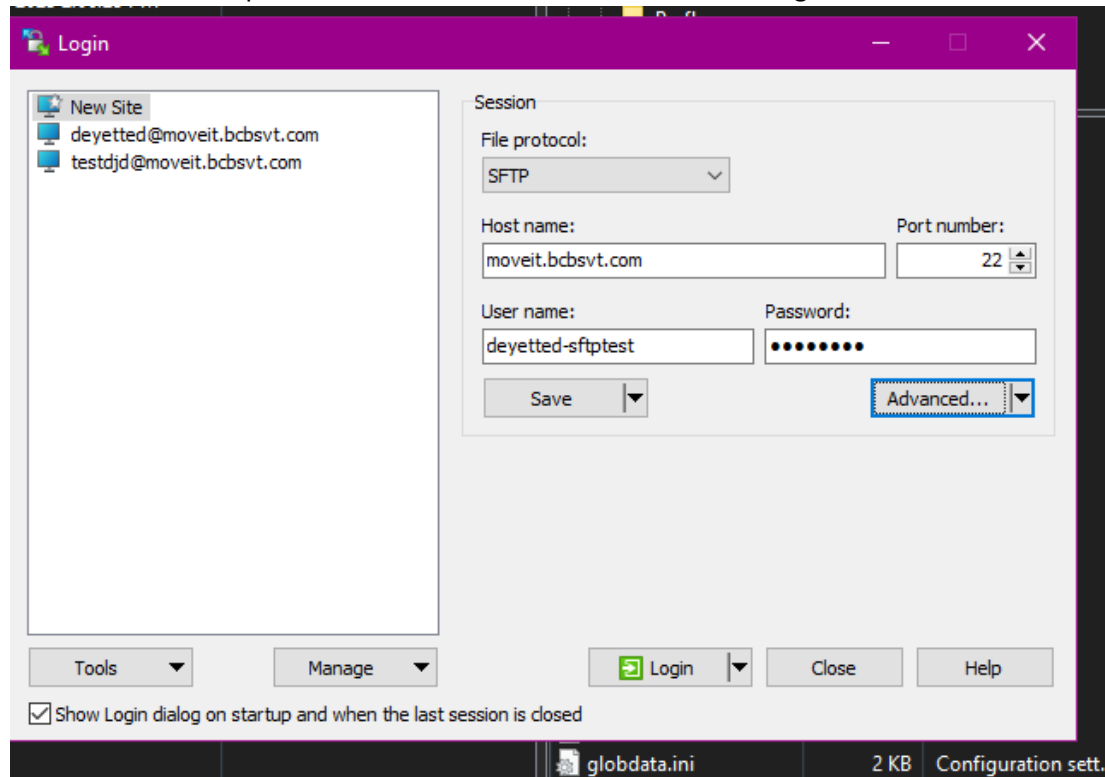
Connect to MOVEit Transfer using SFTP

- **Connect to the BLUE CROSS VT Moveit Transfer server (WinSCP as an example)**
 - WinSCP must be installed on your computer.
 - Open WinSCP
 - Click Session
 - Select New Session



Connect to MOVEit Transfer using SFTP

- Update the fields on this screen to login to BLUE CROSS VT
 - From the File protocol drop down menu select SFTP
 - Type moveit.bcbsvt.com in the Host Name text box
 - Select port 22
 - Type your MoveIT Transfer user id in the User name box*
 - Type your MoveIT Transfer password in the Password box*
 - Click Login
 - *- Note: userid and password are the same as used when accessing moveit.bcbsvt.com over the internet



The screenshot shows the 'Login' dialog box in MOVEit Transfer. The 'Session' tab is active, displaying the following fields and controls:

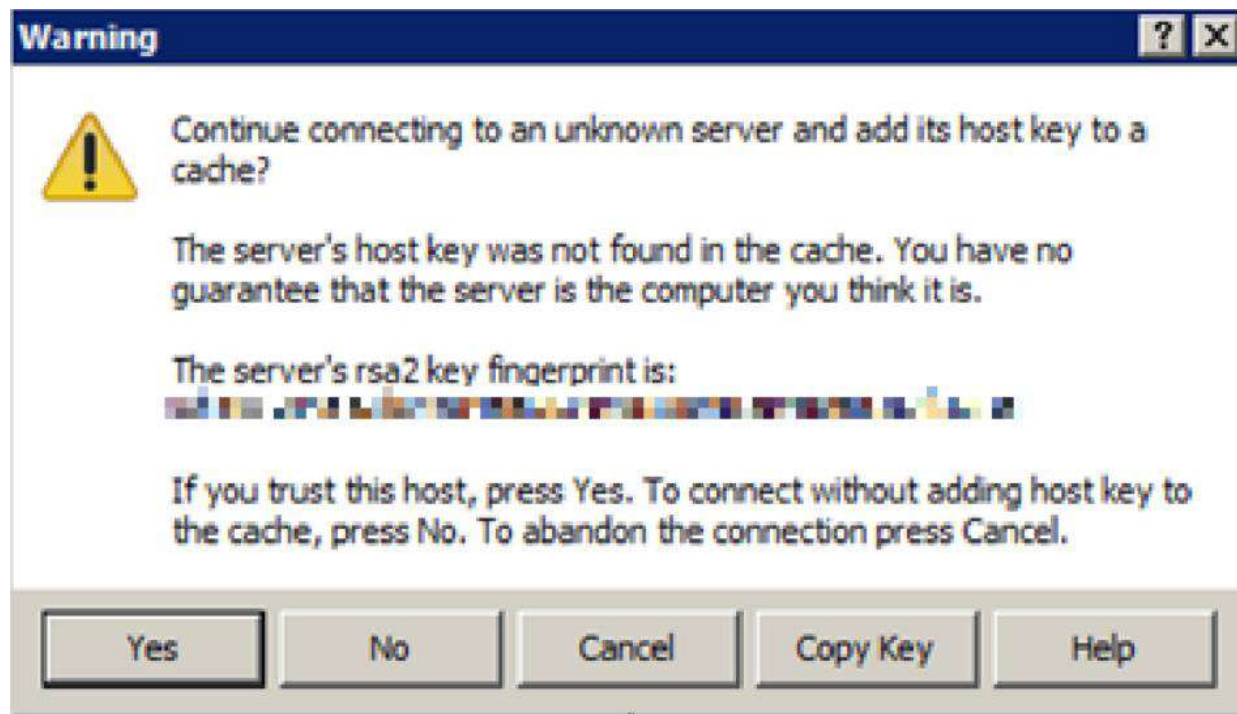
- File protocol:** A dropdown menu set to 'SFTP'.
- Host name:** A text box containing 'moveit.bcbsvt.com'.
- Port number:** A spinner box set to '22'.
- User name:** A text box containing 'deyetted-sftptest'.
- Password:** A text box with masked characters (dots).
- Buttons:** 'Save' (disabled), 'Advanced...' (highlighted with a blue dashed border), 'Login' (with a green icon), 'Close', and 'Help'.
- Footer:** A checkbox labeled 'Show Login dialog on startup and when the last session is closed' is checked. Below it, a status bar shows 'globdata.ini', '2 KB', and 'Configuration sett.'.

On the left side of the dialog, there is a 'New Site' section with a list of saved sites:

- deyetted@moveit.bcbsvt.com
- testdjd@moveit.bcbsvt.com

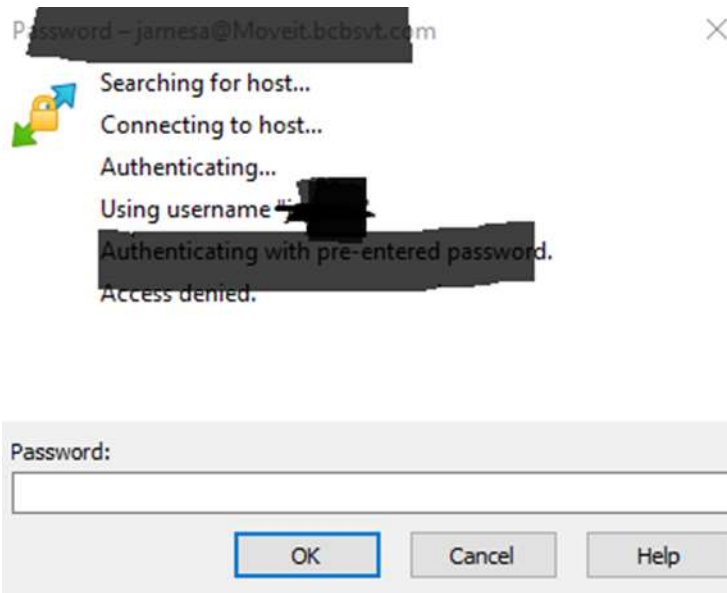
Connect to MOVEit Transfer using SFTP

- The first time connecting to the BLUE CROSS VT MOVEIT Transfer server, a prompt, as shown in the screenshot below will appear asking to add the host key into the WinSCP cache.
- **Click yes**



Connect to MOVEit Transfer using SFTP

- If prompted for a password, no password is required. Click OK (**password will be blank**)

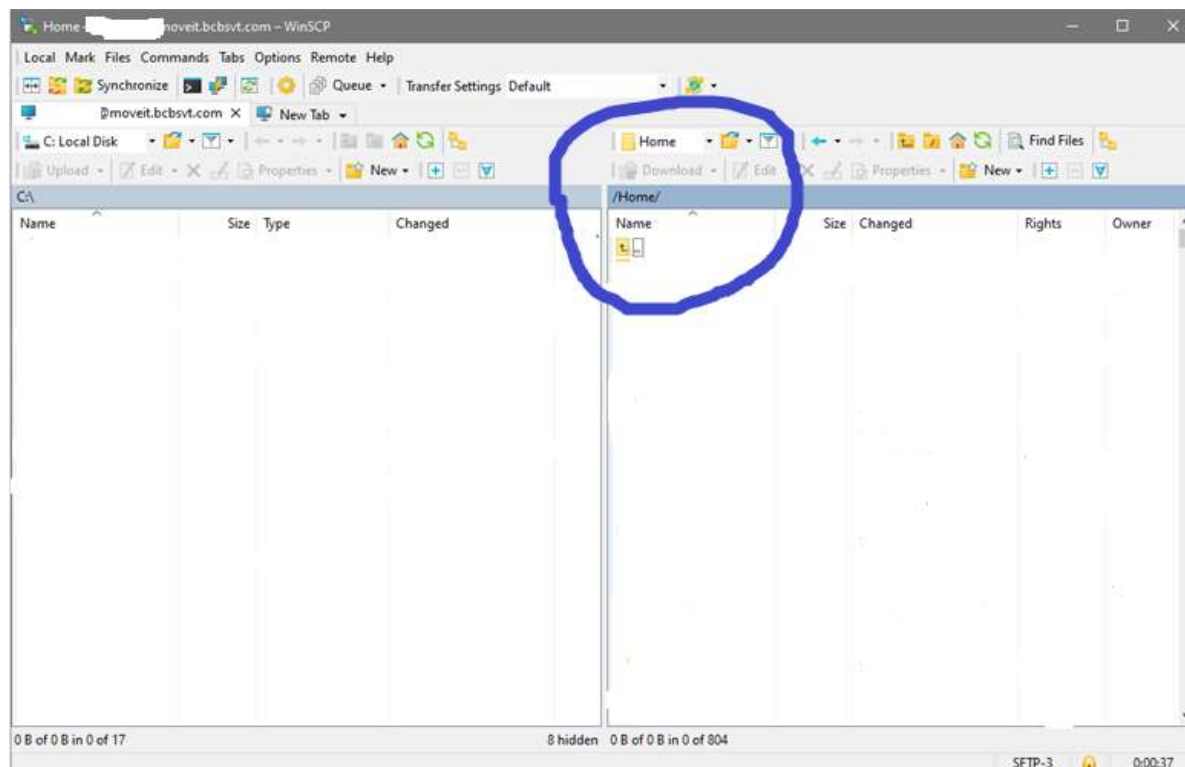


- After the successful login, you will be presented your home directory where you can download or upload files to the MOVEit Transfer site.
- If connectivity issues are experienced, please work with your organization's technical team to ensure that port 22 to the appropriate BLUE CROSS VT site (moveit.bcbsvt.com) is open.

Connect to MOVEit Transfer using SFTP

- **Copy and move files with WinSCP**

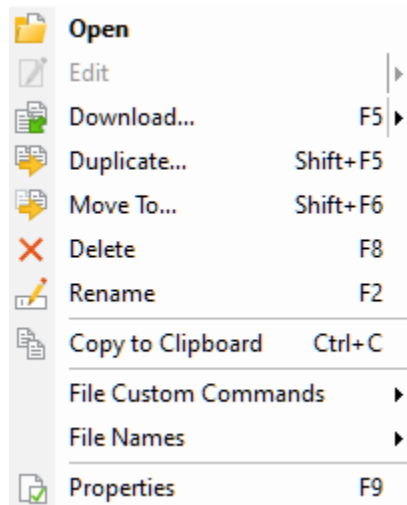
- Drag and drop files using your mouse to upload or download files
 - Once logged in, the folders you have access to will appear on the right side panel. Select the drop down menu as shown to update the display of folders if you do not see all the folder that you expect.
 - **Upload to BLUE CROSS VT** - Use your mouse to drag and drop files from folders on your computer (left panel) to your folders at BLUE CROSS VT (right panel)
 - **Download from BLUE CROSS VT** - Use your mouse to drag and drop files from your folders at BLUE CROSS VT (right panel) to folders on your computer (left panel)



Connect to MOVEit Transfer using SFTP

- Other actions menu

Right click on selected files for a menu of other options such as delete or rename



Connect to MOVEit Transfer using SFTP

- SFTP Client tools supported by MoveIT

- Supported Secure FTP/SSL Clients

- Secure FTP clients using FTP over SSL:

MOVEit Freely (free command-line)

MOVEit Automation (Central) (Supported Versions) (w/Admin& Web Admin)

WS_FTP Professional and WS_FTP Home (GUI, version 7 and higher, Windows) (version 12 and higher)

SmartFTP (GUI, version 1.6 and higher, Windows)

SmartFTP (free GUI, version 1.0 and higher, Windows)

Cute FTP Pro (GUI, version 1.0 and higher, Windows)

BitKinex (GUI, version 2.5 and higher, Windows)

Glub FTP (GUI, Java 2.0 and higher)

FlashFXP (GUI, version 3.0 and higher)

IP*Works SSL (API, Windows, version 5.0)

LFTP (free command-line, Linux, Unix, Solaris, AIX, etc.)

NetKit (command-line, Linux, Unix, Solaris, etc.)

SurgeFTP (command-line, FreeBSD, Linux, Macintosh, Windows, Solaris)

C-Kermit (command-line; v8.0+, AIX, VMS, Linux, Unix, Solaris)

AS/400 native FTPS client (OS/400 minicomputer)

z/OS Secure Sockets FTP client (z/OS mainframe)

TrailBlazer ZMOD (OS/400 minicomputer)

NetFinder (GUI, Apple)

Sterling Commerce (batch, various)

Tumbleweed SecureTransport (4.2+ on Windows, batch, various)

Cleo Lexicom (batch, various)

bTrade TDAccess (batch, AIX, AS/400, HP-UX, Linux, MVS, Solaris, Windows)

cURL (command-line, AIX, HP-UX, Linux, QNX, Windows, AmigaOS, BeOS, Solaris, BSD and more)

South River Technologies "WebDrive" (Windows "drive letter" - requires "passive, implicit and 'PROT P'" options)

Stairways Software Pty Ltd. "Interarchy" (Mac "local drive" and GUI)

Connect to MOVEit Transfer using SFTP

- Supported Secure FTP/SSH (and SCP2) Clients
 - MOVEit has been tested against the most popular secure FTP clients using FTP over SSH as well:
 - OpenSSH sftp for *nix (free command-line, Unix - including Linux and BSD, password and client key modes)
 - OpenSSH for Windows (free command-line, Windows, password and client key modes)
 - OpenSSH sftp for Mac (preinstalled command-line, Mac, password and client key modes)
 - OpenSSH sftp for z/OS (part of "IBM Ported Tools for z/OS", z/OS 1.4+, password and client key modes)
 - Putty PSFTP, (command-line, Windows, password and client key modes)
 - WS_FTP (GUI, Windows, version 7.0 and higher; version 7.62 has a compression-related bug which prevents it from uploading large, highly compressible files)
 - BitKinex (GUI, version 2.5 and higher, Windows)
 - F-Secure SSH (command-line, 3.2.0 Client for Unix, password and client key modes)
 - FileZilla (GUI, Windows)
 - SSH Communications SSH Secure Shell FTP (GUI, Windows, password and client key modes; requires setting # of transfers to 1)
 - SSH Tectia Connector (Windows)
 - SSH Tectia Client (Windows,AIX,HP-UX,Linux,Solaris)
 - J2SSH (free Java class - requires Java 1.3+)
 - Net::SFTP - Net::SSH::Perl (free Perl module for Unix)
 - MacSSH (GUI, Mac, password mode only)
 - Fugu (free GUI, Mac, password mode only)
 - Cyberduck (free GUI, Mac, password and client key modes)
 - Rbrowser (GUI, Mac, password mode only)
 - Transmit2 (GUI, Mac, password and client key modes)
 - gftp (GUI, Linux, password and client key modes)
 - Magnetk LLC sftpdriive (Windows "drive letter", password mode only)
 - South River Technologies "WebDrive" (Windows "drive letter", password mode only)
 - Cyclone Commerce Interchange (Solaris, client key mode only)

Connect to MOVEit Transfer using SFTP

Stairways Software Pty Ltd. "Interarchy" (Mac "local drive" and GUI, password mode only)

Miklos Szeredi's "SSH FileSystem", a.k.a. "SSHFS" (*nix "mount file system" utility, password and client key modes; requires OpenSSH and FUSE)

Tumbleweed SecureTransport (4.2+ on Windows, batch, various)

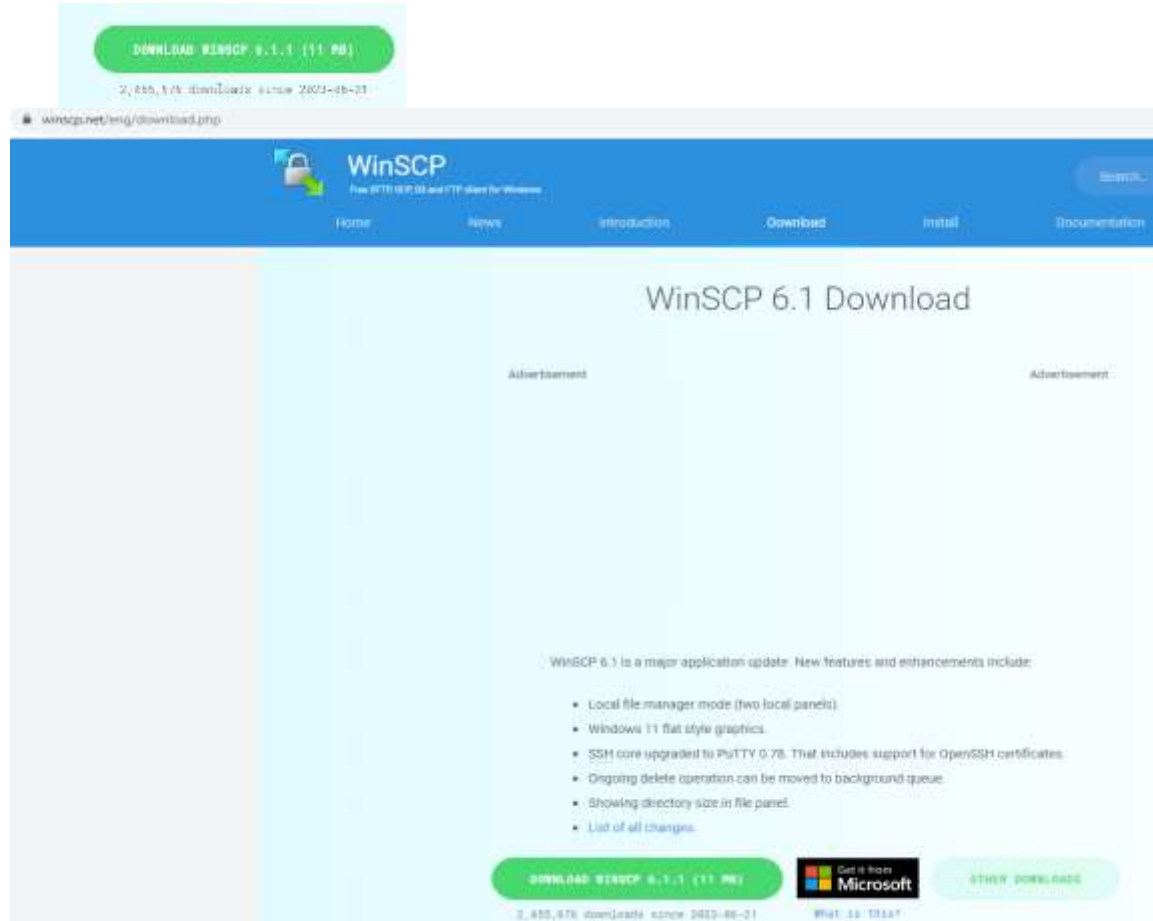
Note: Two of the clients above, (OpenSSH for Windows & SSH Communications), are capable of uploading files using multiple independent threads which may send blocks of data non-sequentially. This mode is not supported by MOVEit SSH and should be disabled using the "-R1" command-line option.

○ SCP clients

- MOVEit has limited connectivity for some SCP clients. This list of clients is limited to those that implement the SCP2 protocol, which uses SFTP as its underlying transfer mechanism.
- The SCP protocol is a combination of the Remote Copy Protocol (RCP) and the Secure Shell (SSH) protocol.
- PSCP, (command-line, Windows, password, and client key modes)
- F-Secure SCP2 (command-line, 3.2.0 Client for Unix, password, and client key modes)
- **WinSCP (command-line; SFTP mode)**

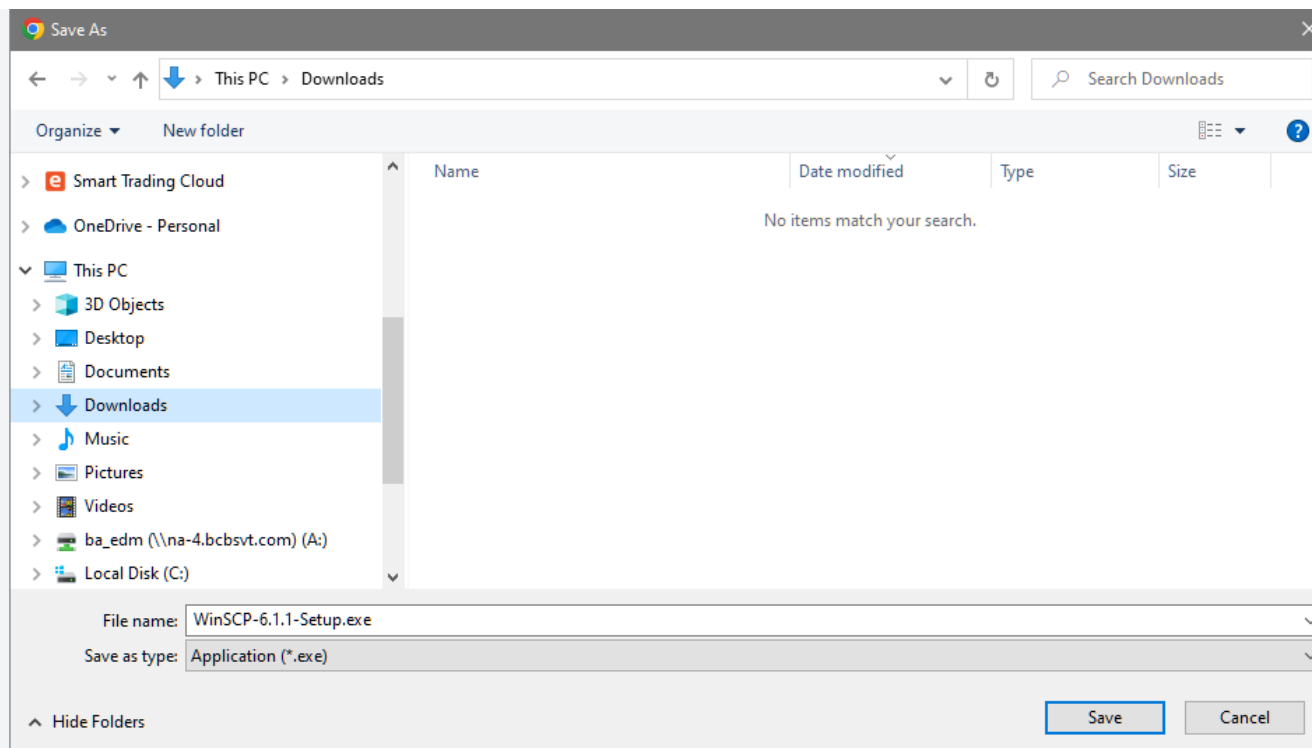
Connect to MOVEit Transfer using SFTP

- WinSCP download hints and tips
 - Click on the link to open the website
 - Click the DOWNLOAD WINSCP button as shown below



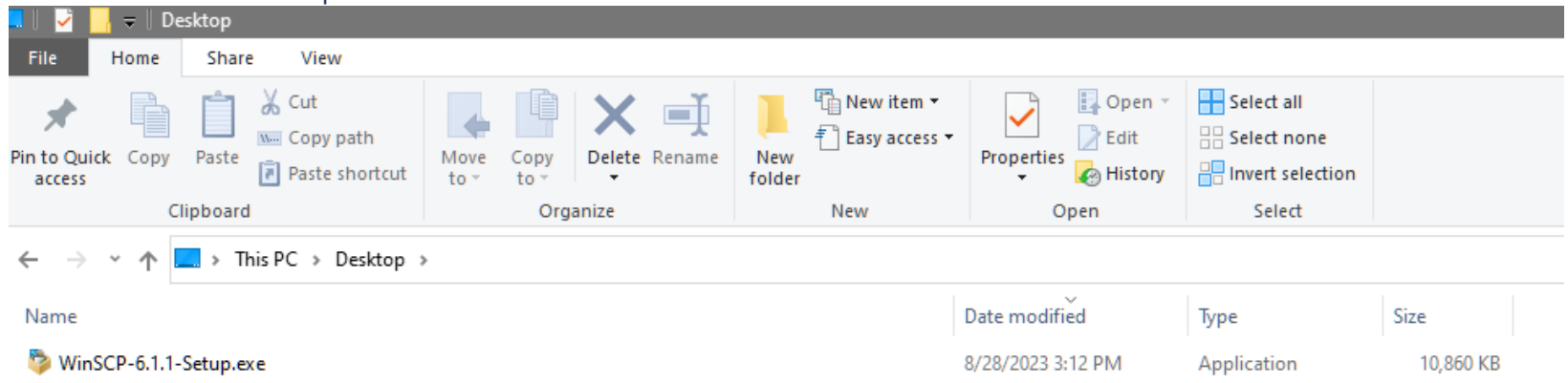
Connect to MOVEit Transfer using SFTP

- A dialog box will open
- Select a location on your computer to save the program
- Note: Check with your IT department for assistance if needed

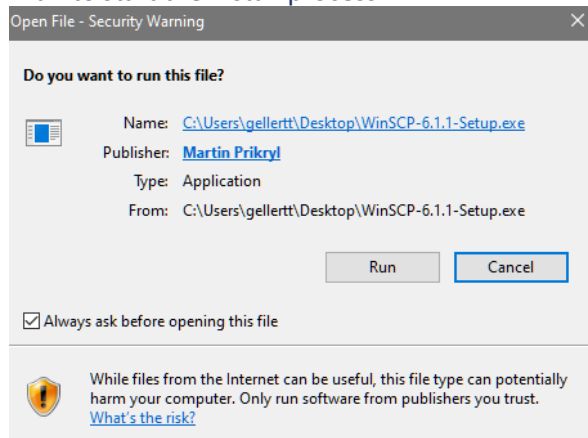


Connect to MOVEit Transfer using SFTP

- Navigate to the downloaded .exe program (Windows Explorer shown here)
- Double-click WinSCP-6.1.1-Setup.exe

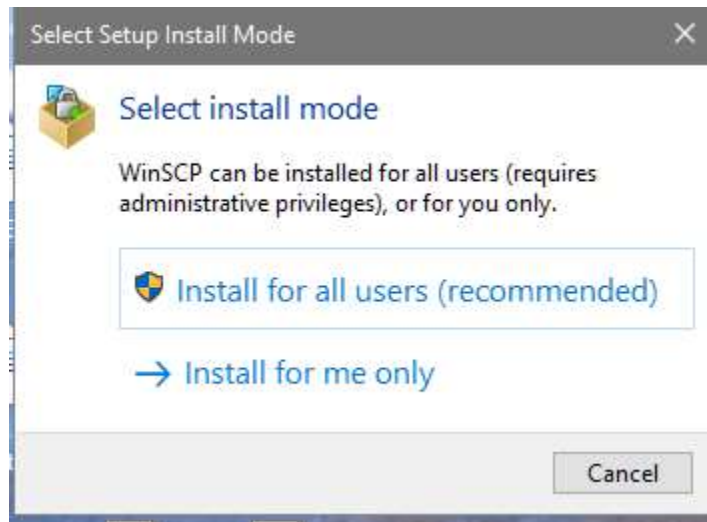


- Click run to start the install process



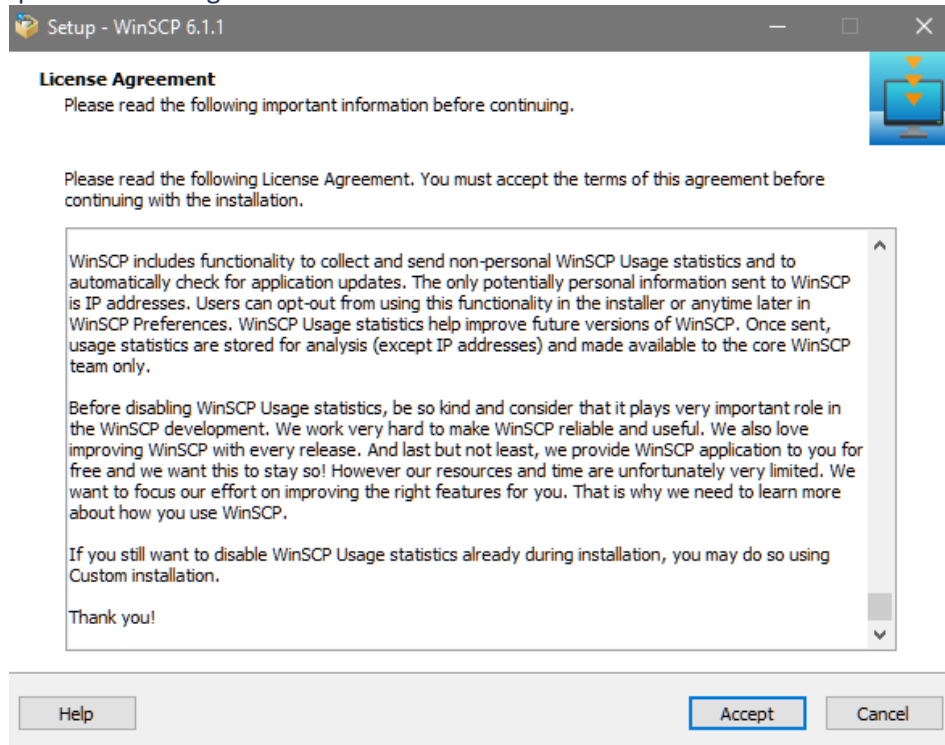
Connect to MOVEit Transfer using SFTP

- Select Install for me only (check with your IT department for assistance if needed)



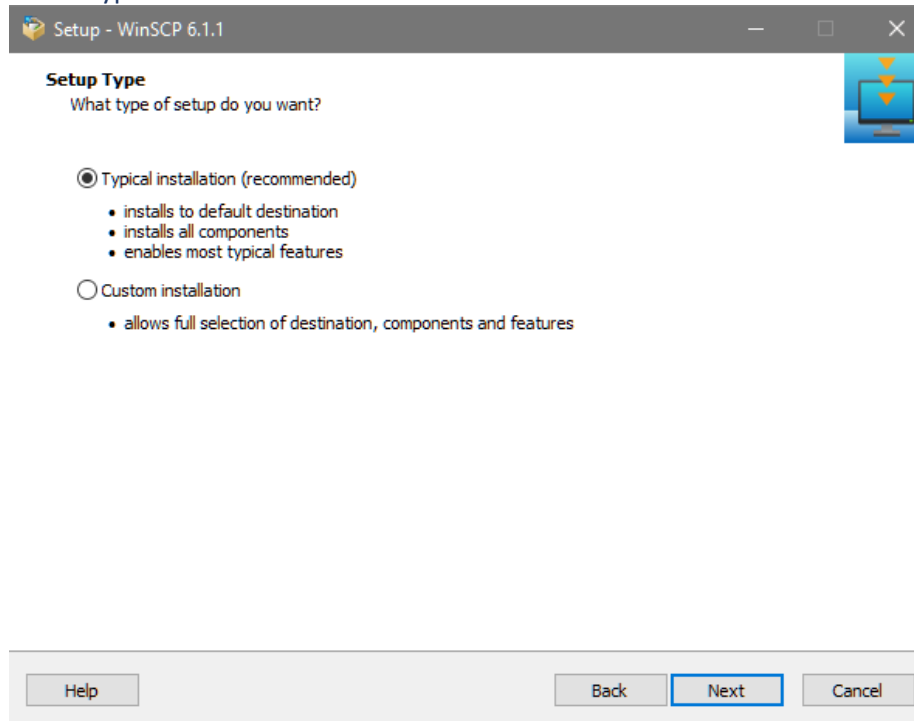
Connect to MOVEit Transfer using SFTP

- Accept the License Agreement



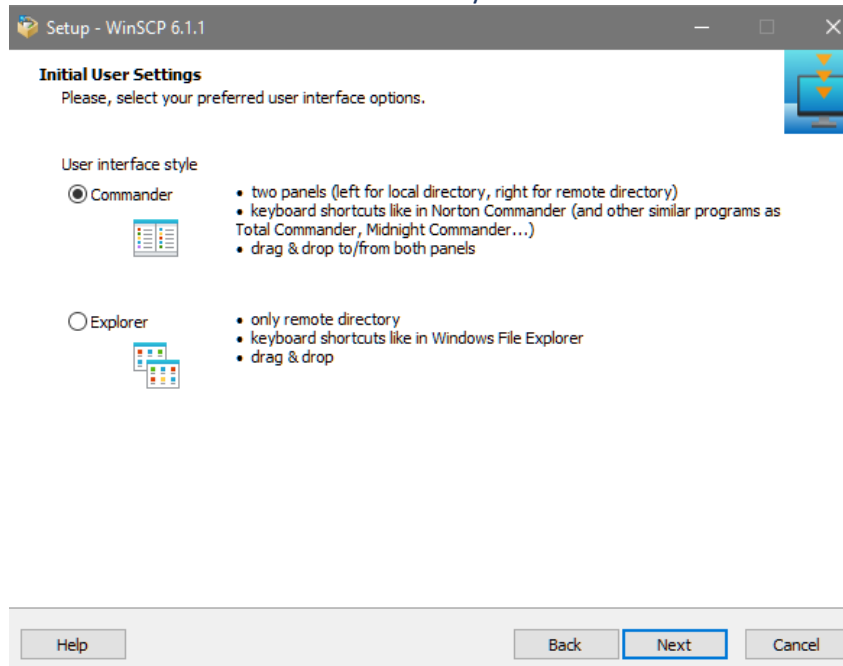
Connect to MOVEit Transfer using SFTP

○ Select Typical installation



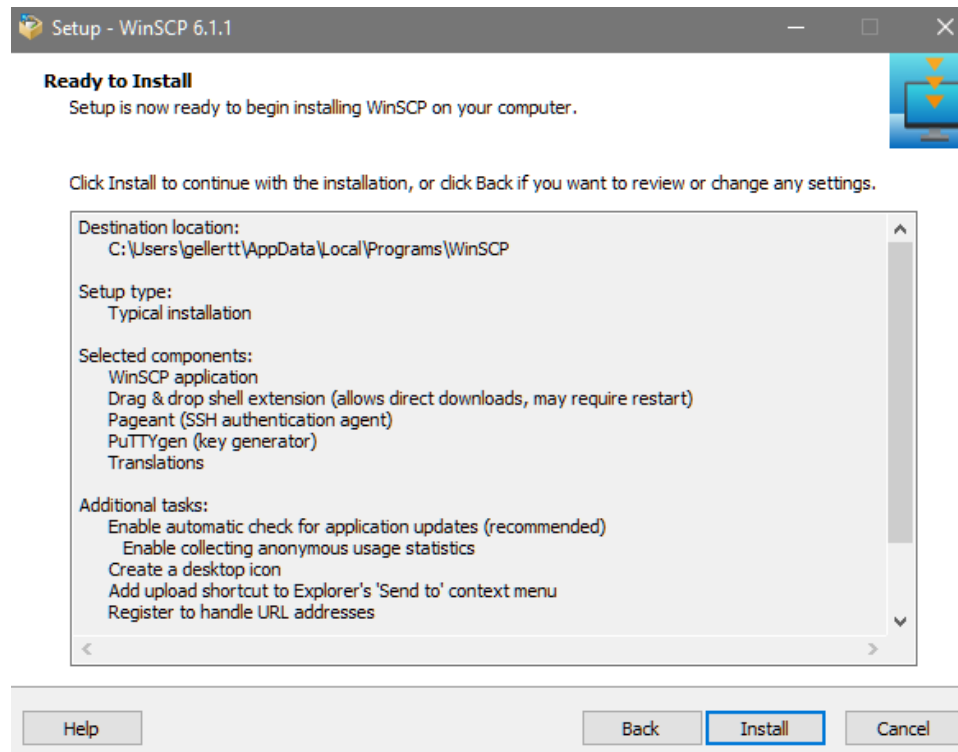
Connect to MOVEit Transfer using SFTP

- Select Commander as User interface style



Connect to MOVEit Transfer using SFTP

- Click Install



Connect to MOVEit Transfer using SFTP

- Select Finish to complete the installation and launch WinSCP for first time connection

